

The TEACH-PD trial

What is the background of the trial?



Peritoneal dialysis (PD) provides flexible dialysis treatment at home.



PD infections are a common reason why patients stop PD.



There is wide variation in PD care across Australia and NZ.

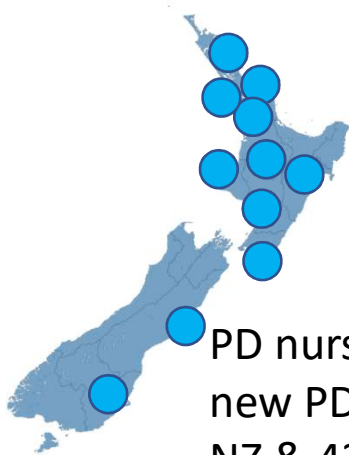


Patients and caregivers consider research for PD infections a high priority

What is the aim of the TEACH-PD trial?

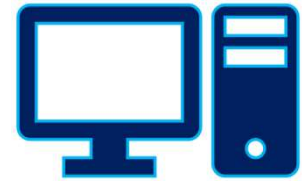
To evaluate whether a standardised curriculum for PD nurse trainers and PD patients reduces PD-related infection compared to standard dialysis care.

How will the TEACH-PD trial work in New Zealand?



PD nurse trainers and new PD patients at all 11 NZ & 42-44 total dialysis units in NZ & Australia.

The whole dialysis unit will be randomly allocated (by chance) to the TEACH-PD curriculum or their usual dialysis care.



In TEACH-PD units, PD nurse trainers and PD patients will complete the online TEACH-PD standardized curriculum and clinical assessments.

The trial will run for 2 years without requiring special clinic visits for patients.



The outcomes will be PD-infections (peritonitis, exit site or tunnel infection, death, starting haemodialysis) entered into the NZ PD registry.